

Bellows couplings

with clamping hub

SPECIFICATION

Bore code

Type **B**: without keyway

Hub

Aluminum **AL**

anodized, natural color

Bellows

Stainless Steel AISI 304 **NI**

Socket cap screws DIN 912

Steel, blackened

Crimp ring

Brass

Temperature resistant up to 120 °C

INFORMATION

Bellows couplings GN 2244 transmit angle positions and torques with extreme precision and zero backlash. The metal bellows also reliably compensates for shaft misalignments and runout tolerances. The clamping hubs make bellows couplings very easy to install.

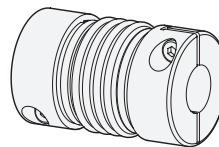
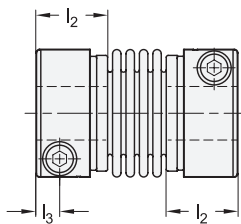
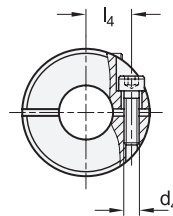
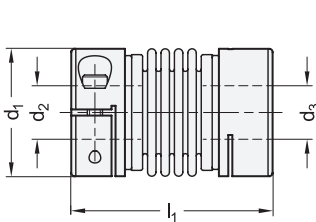
They are used in applications where precise position and movement transmission is required, such as in the servo drive systems of machine tools and in industrial robots.

TECHNICAL INFORMATION

- ISO-Fundamental Tolerances (see page A21)
- Stainless Steel characteristics (see page A26)

ON REQUEST

- Bore with keyway





TECHNICAL VALUES

| d1 | Rated torque in Nm | Max. speed (min ⁻¹) | Moment of inertia in kgm ² | Static torsional stiffness in Nm/rad | Max. shaft misalignment | | |
|----|--------------------|---------------------------------|---------------------------------------|--------------------------------------|-------------------------|-------------|-------------|
| | | | | | lateral in mm | axial in mm | angular in° |
| 19 | 1.5 | 33.000 | 8.6 x 10 ⁻⁷ | 170 | 0.15 | ± 0.5 | 1.5 |
| 27 | 2.3 | 23.000 | 3.6 x 10 ⁻⁶ | 800 | 0.15 | ± 0.5 | 1.5 |
| 32 | 4.5 | 19.000 | 1.1 x 10 ⁻⁶ | 1600 | 0.2 | ± 0.7 | 1.5 |
| 40 | 10 | 15.000 | 2.8 x 10 ⁻⁵ | 2700 | 0.2 | ± 1 | 1.5 |

| Description | d1 | d2 - d3 H8 recommended shaft tolerance h7 | d4 | l1 | l2 recommended shaft insertion depth | l3 | l4 | Tightening torque of the screw in Nm ≈ | |
|-------------------------|----|---|-------|----|--------------------------------------|-----|------|--|-----|
| GN 2244-19-B5-5-AL-NI | 19 | 5-5 | M 2 | 30 | 10.5 | 3 | 6.8 | 0.5 | 16 |
| GN 2244-19-B5-6-AL-NI | 19 | 5-6 | M 2 | 30 | 10.5 | 3 | 6.8 | 0.5 | 16 |
| GN 2244-19-B5-8-AL-NI | 19 | 5-8 | M 2 | 30 | 10.5 | 3 | 6.8 | 0.5 | 16 |
| GN 2244-19-B6-6-AL-NI | 19 | 6-6 | M 2 | 30 | 10.5 | 3 | 6.8 | 0.5 | 16 |
| GN 2244-19-B6-8-AL-NI | 19 | 6-8 | M 2 | 30 | 10.5 | 3 | 6.8 | 0.5 | 16 |
| GN 2244-19-B8-8-AL-NI | 19 | 8-8 | M 2 | 30 | 10.5 | 3 | 6.8 | 0.5 | 16 |
| GN 2244-27-B6-6-AL-NI | 27 | 6-6 | M 2.5 | 35 | 12.5 | 3.5 | 10.3 | 0.9 | 32 |
| GN 2244-27-B6-8-AL-NI | 27 | 6-8 | M 2.5 | 35 | 12.5 | 3.5 | 10.3 | 0.9 | 32 |
| GN 2244-27-B6-10-AL-NI | 27 | 6-10 | M 2.5 | 35 | 12.5 | 3.5 | 10.3 | 0.9 | 32 |
| GN 2244-27-B8-8-AL-NI | 27 | 8-8 | M 2.5 | 35 | 12.5 | 3.5 | 10.3 | 0.9 | 32 |
| GN 2244-27-B8-10-AL-NI | 27 | 8-10 | M 2.5 | 35 | 12.5 | 3.5 | 10.3 | 0.9 | 32 |
| GN 2244-27-B10-10-AL-NI | 27 | 10-10 | M 2.5 | 35 | 12.5 | 3.5 | 10.3 | 0.9 | 32 |
| GN 2244-32-B10-10-AL-NI | 32 | 10-10 | M 3 | 46 | 15.5 | 4.3 | 12 | 1.5 | 68 |
| GN 2244-32-B10-12-AL-NI | 32 | 10-12 | M 3 | 46 | 15.5 | 4.3 | 12 | 1.5 | 68 |
| GN 2244-32-B10-14-AL-NI | 32 | 10-14 | M 3 | 46 | 15.5 | 4.3 | 12 | 1.5 | 68 |
| GN 2244-32-B12-12-AL-NI | 32 | 12-12 | M 3 | 46 | 15.5 | 4.3 | 12 | 1.5 | 68 |
| GN 2244-32-B12-14-AL-NI | 32 | 12-14 | M 3 | 46 | 15.5 | 4.3 | 12 | 1.5 | 68 |
| GN 2244-32-B14-14-AL-NI | 32 | 14-14 | M 3 | 46 | 15.5 | 4.3 | 12 | 1.5 | 68 |
| GN 2244-40-B12-12-AL-NI | 40 | 12-12 | M 4 | 51 | 16 | 5 | 15 | 3.5 | 110 |
| GN 2244-40-B12-15-AL-NI | 40 | 12-15 | M 4 | 51 | 16 | 5 | 15 | 3.5 | 110 |
| GN 2244-40-B12-19-AL-NI | 40 | 12-19 | M 4 | 51 | 16 | 5 | 15 | 3.5 | 110 |
| GN 2244-40-B15-15-AL-NI | 40 | 15-15 | M 4 | 51 | 16 | 5 | 15 | 3.5 | 110 |
| GN 2244-40-B15-19-AL-NI | 40 | 15-19 | M 4 | 51 | 16 | 5 | 15 | 3.5 | 110 |
| GN 2244-40-B19-19-AL-NI | 40 | 19-19 | M 4 | 51 | 16 | 5 | 15 | 3.5 | 110 |

Joints, Couplings, Gears 10